



STEPPING UP
TO REGENERATE THE
FASHION INDUSTRY

FOREWORD



Cotton is one of the most widely used natural fibres in the world. Conventional cotton production methods have a significant environmental impact, but there are ways to reduce this impact. By adopting sustainable farming practices, we can protect our environment and ensure that cotton continues to be a sustainable and preferred fibre.

Through our innovative “Direct-to-Grower” program, we source regenerative cotton directly from farmers who share our commitment to sustainable and regenerative farming practices.

In addition, we have seamlessly integrated FibreTrace® technology into our value chain, offering complete visibility from fibre to finished products throughout the global supply chain.

TAL is wholeheartedly committed to leading the change in how the world sustainably clothes itself. We firmly believe that sustainable cultivation of cotton is one of the keys to combatting environmental degradation.

Dr. Delman Lee
Vice Chair

INDEX

Can Fashion Become Carbon Negative?	P. 3
Strengthening The Weakest Link In The Agriculture Supply Chain	P. 6
The Future Of Regenerative Farming Is Now	P. 9
Together We Can Change The Narrative Thread	P. 12



CAN
FASHION
BECOME
CARBON
NEGATIVE?



BACK DOWN TO EARTH

Nearly half of the carbon naturally stored in the earth's soil has been released into the atmosphere, and this trend is contributing to the negative impacts of climate change.

Given the daunting environmental challenges ahead, it is imperative that the industry progresses to the next stage — from carbon neutrality to carbon negativity — meaning to remove more carbon from the atmosphere than added by the production process.

For the fashion industry to become carbon negative and restore nature's balance in meaningful ways, Regenerative Agriculture will need to play an increasingly pivotal role.



What is Regenerative Agriculture?



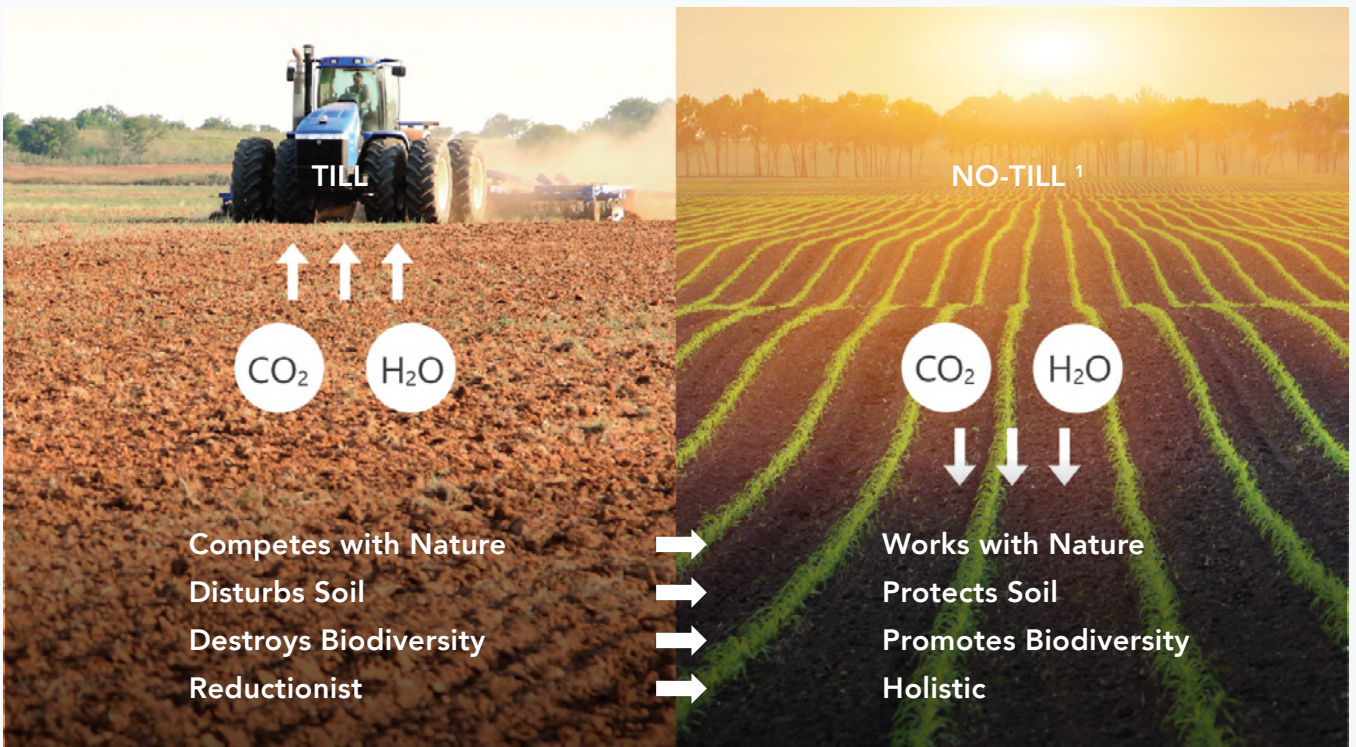
At its core, Regenerative Agriculture is a holistic system of farming practices and principles that supports biodiversity, enriches soils, improves watersheds, and increases the capacity of the soil to capture and store carbon.

Natural Process that Mimics the Ways of Nature

The negative impact of the fashion industry can be traced back to the way materials are sown and harvested. Conventional farming methods work against nature, leading to soil degradation and leaving a trail of destruction. Regenerative agriculture nourishes nature by replenishing and strengthening the plants and the soil in a circular ecosystem. It's not just sustainable. It's regenerative.

Degenerative Agriculture

Regenerative Agriculture



¹ No-till farming involves planting crops without disturbing the soil, leaving crop residues on the surface to increase carbon sequestration through microbial activity. It also reduces soil erosion and improves soil health.



STRENGTHENING
THE WEAKEST LINK
IN THE
AGRICULTURE
SUPPLY CHAIN



DIRECT-TO-GROWER— A NEW ERA OF TRANSPARENCY

Accountability in the complex global value chain has long been a weak link. Through this innovative Direct-to-Grower scheme, TAL fosters close working relationships with individual farms to ensure the highest standards of responsibility and transparency.



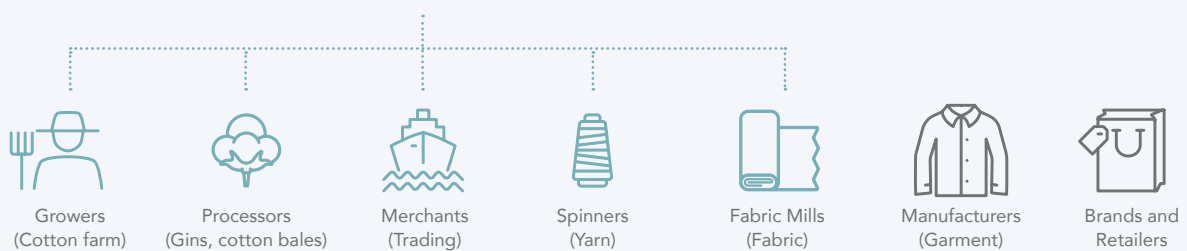
What is Direct-to-Grower?

- Connects brands/retailers, fabric mills and spinners with growers who are committed to advancing transparency and environmental excellence
- Builds a transparent grower-to-consumer supply chain, sourcing cotton fibres directly from growers/gins
- Ensures the highest standards of quality, transparency, and sustainability

A Shared Future that Benefits All

Through the Direct-to-Grower Program, growers, traders and brands are empowered to engage with each other, building trust and promoting transparency throughout the supply chain.

DIRECT-TO-GROWER PROGRAM





The Most Refined Regenerative Cotton in the World

TAL sources regenerative cotton from farms in Australia and the US certified by regenagri, which helps farms reap the rewards of regenerative practices. Good Earth Cotton®, for instance, offers sustainable and ecologically efficient agricultural production that results in more carbon being sequestered than emitted during its lifecycle. Modern regenerative farming practices yield premium Pima cotton with extra-long staple fibres that produce some of the world's most refined luxurious cotton.



The Power of Innovation. The Power of Information.

Since 2018, the Blockchain technology behind FibreTrace® has rapidly evolved to offer the ability to tag and track a fabric through each stage of production — allowing for a fully visible supply chain.

Addressing the weakest link in the agriculture supply chain, this end-to-end transparency fosters both brand and supplier accountability along with consumer awareness of the environmental and social implications of their textile products.

With the innovation of FibreTrace® technology offered by TAL, consumers now have the power of information in the palm of their hands.



THE FUTURE OF REGENERATIVE FARMING IS NOW



A CONVERSATION WITH PIONEERS IN THE FIELD OF REGENERATIVE FARMING

Meet David and Danielle Statham, co-owners of Sundown Pastoral Company, a leading Australian agricultural operator at the forefront of innovation in modern regenerative agricultural technology and practices. TAL sources regenerative cotton through their specialized Good Earth Cotton® program, which can be tracked using FibreTrace® technology.



“WE LOOK AT REGENERATIVE AGRICULTURE AS THE ONLY WAY FORWARD.”

T: TAL Apparel S: Sundown Pastoral Company

T: What inspired you to pursue a more sustainable and regenerative approach to cotton farming?

S: The motivation behind Good Earth Cotton® was the insight that farmers have a key role to play in the change necessary throughout the fashion industry for improved environmental impacts.

We are passionate about regenerative agriculture, environmental preservation, and building a program that can positively impact livelihoods and look at regenerative agriculture as the only way forward.





T: How do you collaborate with other stakeholders in the cotton industry to promote sustainable and ethical production practices, and what impact do you hope to have on the industry as a whole?

S: The most important thing is that we form partnerships with brands and suppliers who uphold similar values to ourselves and share the passion of protecting our environment - going the extra mile in assessing our reports, visiting our properties, visiting and assessing your supplier, working together with value chain partners to ensure best practices and International Standards are upheld.

We hope to inspire more brands, manufacturers, and cotton growers to consider their impact and understand our vision for climate-positive traceable cotton production through primary impact data and traceability technology.

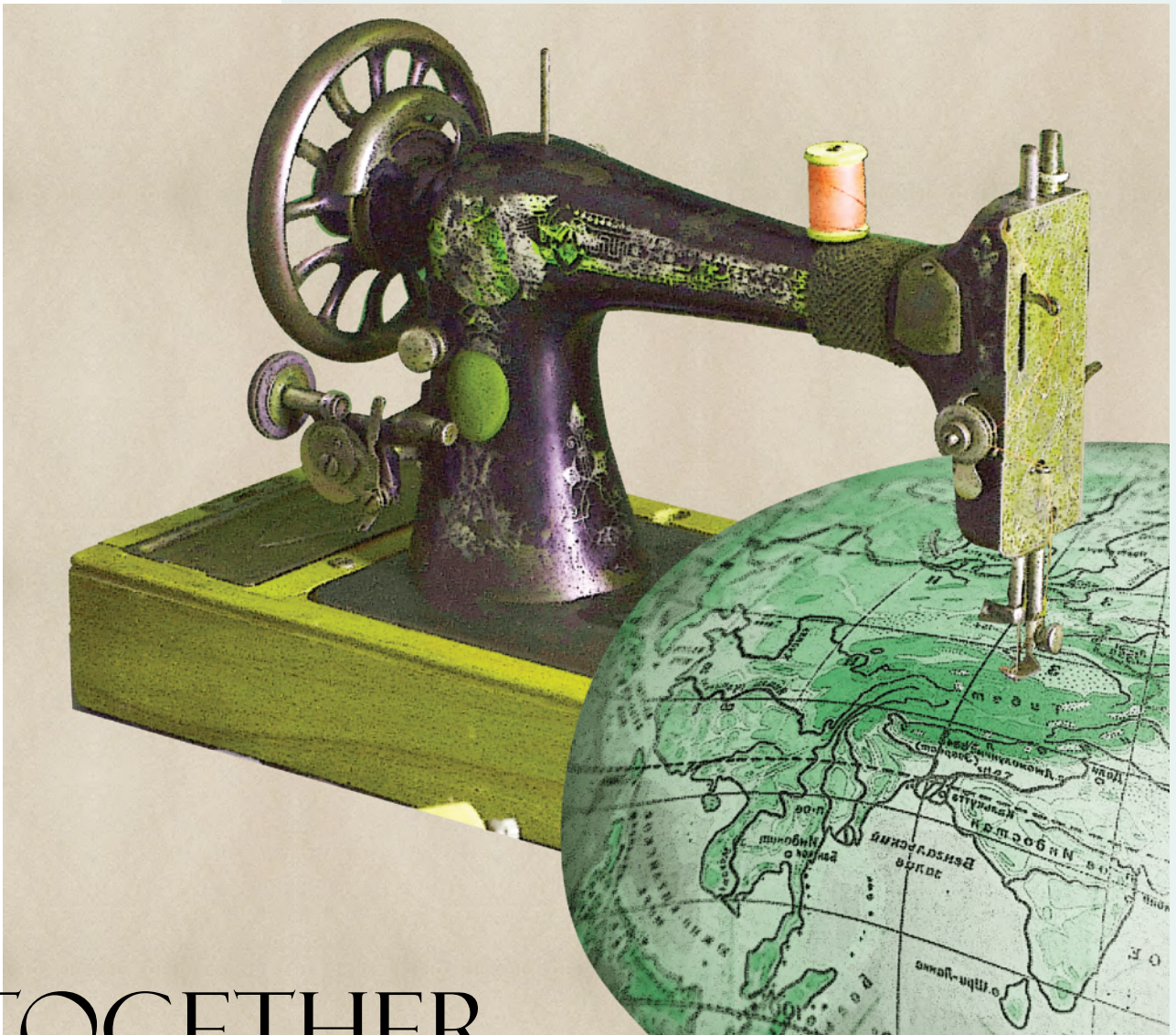
T: What challenges have you faced in transitioning to regenerative cotton farming, and how have you addressed these challenges?

S: It took us from the early 2000's to 2017 to map out the practice changes necessary to allow us to formally sequester more than we emit. Since then, we have been able to turn the Good Earth Cotton® program into a guidebook for farmers to accelerate the regenerative change. This inspiration for change comes from our believe that pastoral agriculture has a particularly significant role to play in solving the climate crisis.

T: Can you tell us about the innovative solutions or technologies you have implemented to improve traceability and promote transparency in your supply chain?

S: Founded in 2018, FibreTrace® is an advanced textile traceability solution, providing physical and digital traceability to the global textile industry and addressing long-standing gaps for brands and retailers to verify provenance and substantiate environmental claims. Today, all Good Earth Cotton® fibres are 100% traceable through the power of FibreTrace®.





TOGETHER
WE CAN
CHANGE THE
NARRATIVE
THREAD



PRIORITIZING RESPONSIBLE PRACTICES

Sustainability is one of the key metrics of TAL's success. Our pursuit of certification programs ensures that we stay on the leading edge of change in social and corporate responsibility. We strive to achieve 100% sustainability to mitigate the fashion industry's environmental impact.

SIGNS OF CERTIFIED QUALITY AT EVERY STEP



RAW MATERIALS




MILLS




CHEMICAL AND TRIMS




TAL




END PRODUCTS



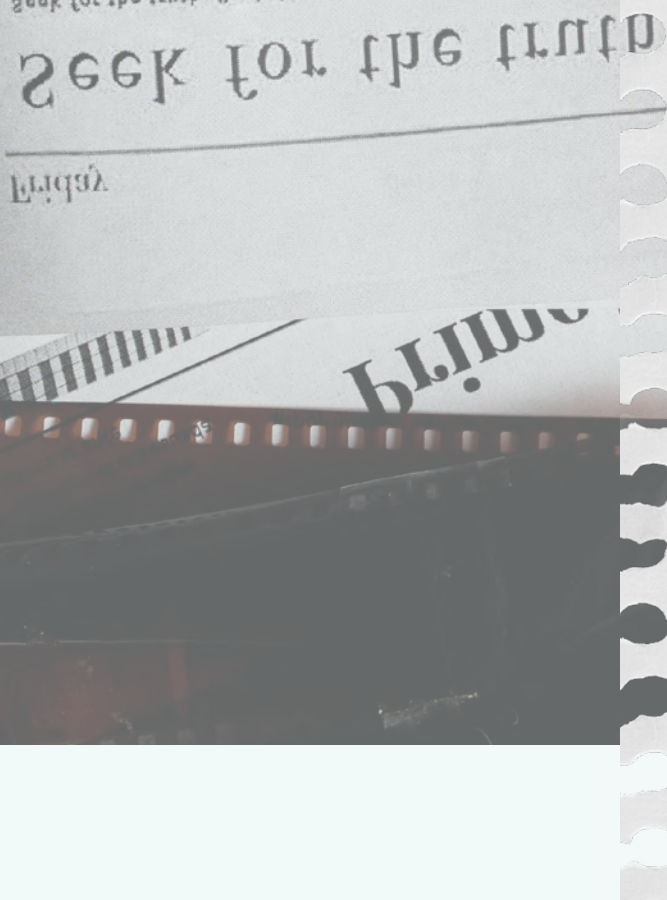
Spotlighting Sustainability and Ethical Practices on Center Stage

As a leading garment manufacturer, TAL understands that every decision we make impacts the wellbeing of not only local communities, but also the world at large.

By embracing sustainable and ethical practices, we can prioritize planet positive actions and promote greater social responsibility.

TAL is fully committed to continue working with all our stakeholders towards a more sustainable future. Together we have the opportunity to shape a healthier planet and a brighter future for all.

CREDITS



SPECIAL THANKS TO CONTRIBUTORS

Sundown Pastoral Company

David Statham
Danielle Statham

Good Earth Cotton® and FibreTrace®

Bek McQuoid
Tess Stutchbury

TAL Apparel

Delman Lee
Sando Chan
Kit Li

TALUSMORE TEAM

Raingo Tong
Joss Wong